



Our School Newsletter

Principal: Sally Smithard
School Captains: Jed Garcia and Souad Khan
School Council President: Ross Abbott

ISSUE 39

5 - 16 August 2019

Important Dates – Term 3 2019

W5	Mon 11 Nov	Year 12 2019 Sign Out Day #1
W5	Tues 12 Nov	Year 12 2019 Sign Out Day #2
W5	Wed 13 Nov	Year 12 2019 Formal
W8	Tues 3 Dec	Presentation Day
W9	Mon 9 Dec	Year 11 2020 Confirmation Day
W9, W10	Thur 12 Dec – Fri 20 Dec	End of Year Trek - Jugungal
W10	Mon 16 Dec – Wed 18 Dec	Collaroy Leadership Camp
W10	Mon 16 Dec – Wed 18 Dec	School Leadership Program

Principal's Report

The Higher School Certificate Examinations are continuing and these examinations appear to be going as smoothly as possible. Thank you to our school community for the respect they have shown Year 12 by ensuring that noise does not affect the students completing the examinations. A reminder to Year 12 that they should let the supervisors know if there are any concerns during the examinations and that they should (even if ill) turn up to the examination as there is no guarantee that NESA will uphold an appeal.

Continued over the page →



Some of our wonderful student helpers from our Enrolment Evenings

We wish all Year 12 2019 students the best during this period of time.

At the end of the Higher School Certificate Examination process, students are required to sign out of St Marys Senior High School. Sign out Day takes place over two days; Monday November 11 and Tuesday November 12. Students are asked to return their texts before the sign out days to assist with a smooth sign out day and allow for texts to be distributed to the next cohort of students.

Year 11 or should I say Year 12, 2020 are now well into their Higher School Certificate courses. It will only be a couple of weeks and the first of our classes will complete their first assessment task of the Higher School Certificate course. It is vital that you ensure you are well organised to support your studies over the next 12 months. This includes planners – which we have available on the tables just outside the Administration building, a space to study at home and a focus on your own wellbeing; sleep, exercise, healthy eating and social support.

Our Enrolment Evenings for Year 11, 2020 took place on Wednesday and Thursday evening of Week One this term. These are long evenings and I thank our staff for their time. The small group approach allows us to personalise the experience as much as possible for our incoming students and their families. We had a great turn out and we look forward to working with our new students in 2020. A reminder to our incoming students that you are required to attend Confirmation Day on Monday 9th December. If you are unable to attend can you please contact Sue Brown (Enrolment Secretary) in our Front Office on 9623-8333.

Sally Smithard

Principal



Do you need extra assistance?

Just a reminder that we have a number of opportunities for students to access additional support and assistance as we move into Year 12 and start the Higher School Certificate:

1. **After school tutorials** are offered by staff across the school in a number of different subjects. The range are shown on the schedule found in this newsletter as well as on Skoolbag and the school website. These tutorials are coordinated by Matt Topp (Deputy Principal, Relieving) – be sure to see the teachers running the tutorials or Matt if you have any questions.
2. **Study periods in the Learning Centre** are a great opportunity to work with your peers and teachers to complete tasks as well as revise course material. Peer Tutors will start to become available in Week 3 of this term, but teaching staff are always available to offer their guidance and assistance as needed. The timetable of teachers available to help is on Skoolbag and the school website, as well as being posted in the Learning Centre.
3. **Disability Provisions** for assessment tasks are defined and decided by NESA, and more information about these provisions will be released during this term. If you think you require these provisions, or **accommodations or adjustments** to your course material, you should pop in and see Carmel, Dianne, Nicole, Carly or Leah in the Learning Centre early this term.
4. **Student Advisers** are also available to provide advice and assistance to students on a range of matters, including creating study planners and working to access additional support. The team of Student Advisers working with Year 12 2020 is made up of:
 - Mitchell Baker (TAS/PDHPE Faculty, TAS Staffroom), who is working with students with surnames A-G
 - Lynette Tuckwell (Careers Adviser, Library) who is working with students with surnames H-O
 - Jesse Vassallo (TAS/PDHPE Faculty, PE Staffroom), who is working with students with surnames P-Z

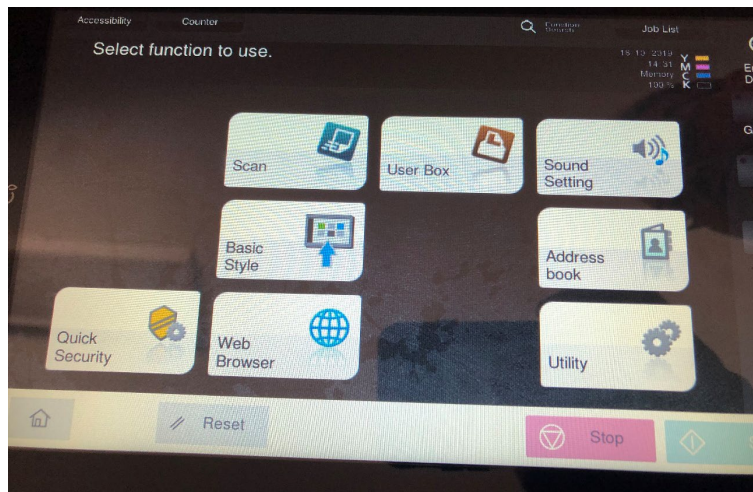
Please be sure to see one of our team if you have any questions or concerns.

~ The Student Services and Wellbeing Team

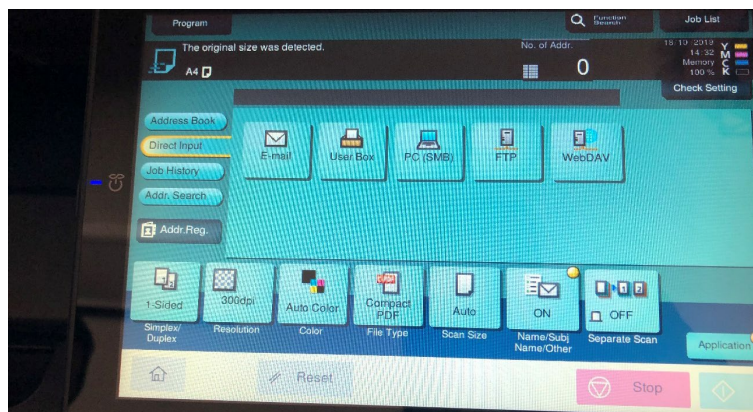


Learning Centre Printer

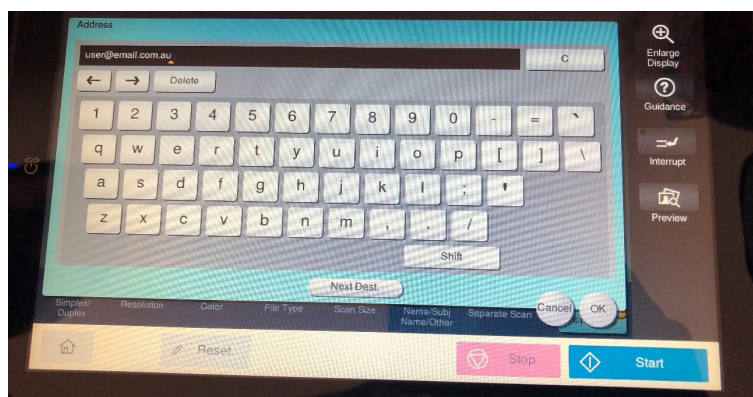
Recently, the school bought a new printer for the Learning centre. New printers will arrive shortly for the Library and Technology Centre. The new printers have a scan to email function, which is useful for students if they wish to send notes to themselves. This is a short tutorial showing how this function works:



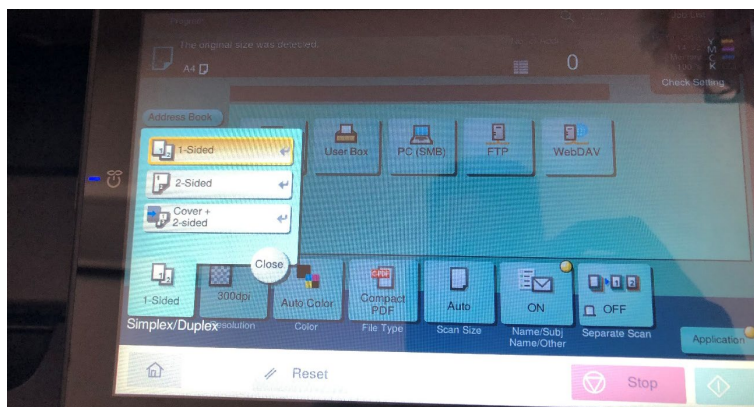
To start, put your pages into the document feeder on top of the printer and tap the Scan icon. Please note, pages must be unbound. Staples need to be removed and smoothed out. Scrunched pages or bound pages will cause a jam in the document feeder.



Tap on Direct Input, then email.



Add your email address, it can be either your personal email or school email address, just ensure that it is correct.



You have the flexibility to change the format of your scans. In the tab **1-Sided option**, you can choose to scan both sides of your notes at once by simply selecting the 2-sided option.

In the tab **300dpi** you can change the quality of your scan. For the most part, 300dpi (dots per inch) is sufficient for note scanning. A higher quality scan, for example 600dpi will produce higher quality notes, but also increase the size of the file. Very big files will not email.

Note: Email attachment sizes vary from program to program, but in general:

- Yahoo mail and Gmail's attachment size is 25MB
- Hotmail and Microsoft Live email attachment size is limited to 10MB

If you have a lot of scanning to do, it may be a better option to scan to USB. There is a USB port to the right hand side of the printer. This will enable scanning larger amounts without the likelihood of having a job not send.

When the new printers arrive in the Library and Technology Centres, these features will be available there as well.



Congratulations to Lynette Tuckwell and the Transition Team for their outstanding efforts in securing 107 early entry offers to Macquarie University in 2020.

This is a testament to Lynette and the Transition Team's hard work and the outstanding students we develop at St Marys Senior High School.

If students in Year 12, 2020 are considering an early entry to university, the Transition Team has a Google classroom to assist that process. The classroom code is **jjws7yo**.






This week @ SMSHS

Monday 28 October	Tuesday 29 October	Wednesday 30 October	Thursday 31 October	Friday 1 November
WEEK A Higher School Certificate examinations 2020 S&C PIP planning excursion	Higher School Certificate examinations	Higher School Certificate examinations	Higher School Certificate examinations	Higher School Certificate examinations
Monday 4 November	Tuesday 5 November	Wednesday 6 November	Thursday 7 November	Friday 8 November
WEEK B Higher School Certificate examinations	Higher School Certificate examinations 2020 Dance Sydney Dance Company excursion	Higher School Certificate examinations	Higher School Certificate examinations	Higher School Certificate examinations

Our Staff Teams

Principal:	Sally Smithard
School Leadership Team:	
- Deputy Principal (Year 11)	Danielle Ervine
- Deputy Principal (Year 12 - Rel)	Matthew Topp
- English	Julie Robinson
- Mathematics	Simone Pett
- Science	Lidija Radovancevic
- Commercial Studies	Salochna Reddy
- HSIE (Rel)	Rebecca Langham
- CAPA	Nicole Bonfield
- Computing	Matthew Topp
- LOTE	Luigi Serra
- TAS/PDHPE	Rebecca Powell
- Secondary Studies	Liz Hemmings
- Student Services	Leah Havord
- First Australians	Leah Havord
- Sport and Recreation	Joanne Brines
- School Administrative Manager	Rebecca Zinghini
Student Advisers:	
- Year 11, Surnames A-G	Mitchell Baker
- Year 11, Surnames H-O	Lyn Tuckwell
- Year 11, Surnames P-Z	Jesse Vassallo
- Year 12, Surnames A-G	Luigi Serra
- Year 12, Surnames H-O	Andrew Mabey
- Year 12, Surnames P-Z	Nicola Preston
Learning Support:	Carmel Harriden Dianne Pyne Nicole Leong
Careers Adviser:	Lyn Tuckwell

Contact us

	St Marys Senior High School Kalang Avenue St Marys NSW 2760
	02 9623 8333
	stmaryssen-h.school@det.nsw.edu.au
	St Marys Senior High School Official Site - Facebook
	St Marys Senior High School - Skoolbag App