



TERM 1 WEEKS 9 AND 10		
22 March – 1 April 2021		
Important Dates – Term 1 2021		
W9	Tue 23 Mar	School Council Meeting <i>6pm, Front office</i>
W9	Fri 26 Mar	Open Evening, <i>ticketed entry only</i>
W10	Thu 1 Apr	Last day of classes for Term 1
W10	Fri 2 Apr	Good Friday (public holiday)
Important Dates – Term 2 2021		
W1	Tue 20 Apr	First day of classes for Term 2
W2	Thur 29 Apr	2021 HSC timetable released by NESA
W5	Fri 21 May	Year 11 2022 Expressions of Interest due
W6	Tue 25 May	School Council Meeting <i>6pm, Front office</i>
W6	Wed 26 May	National Sorry Day 2021 – start of National Reconciliation Week 2021
W10	Tue 22 Jun	School Council Meeting <i>6pm, Front office</i>
W10	Fri 25 Jun	Last day of classes for Term 2 Western Sydney Careers Expo, Year 12 2021 – <i>to be confirmed</i>



Principal’s Report

I am extremely honoured to be the principal of our wonderful senior high school. We are a fiercely proud public school which provides our students with the support, confidence and capacity to become global focussed, honourable citizens who substantially contribute to an ever changing world.

The next few weeks at St Marys Senior High School are deeply intense with quite a heavy assessment period for many students. I have written about the support available in previous newsletters but it is imperative that our students know that there is support available from a variety of sources if needed. Just a reminder that your Mentor Teacher or Personal Mentor, and your Student Adviser are great first points of call. Students can self-refer to our counsellors. Your Deputy Principal and myself are also important contacts of support. Please remember that wellbeing is not a thing we do at a point in time, it is about developing your overall health which enables you to overcome difficulties and achieve your goals.

As Year 12 progress throughout their final year of

Continued over the page →



Principal's Report continued

schooling many students are looking at scholarships, early entrance into university and alternative pathways. Many of these alternative pathways require students to obtain references from their school. At St Marys Senior High School, these references are completed by the Principal. Staff are not able to complete written references. As discussed on day one it is imperative that students book in a time with me to ensure that I can provide them with the support in this process to unpack the material in their portfolios. If students leave a request for a reference to the last minute, their reference may be limited. My preference is to spend some time with each student with their portfolio developed through Mentor and Personal Mentor, to link their reference to the core skills required by each university. Early in Term 2 I will provide students in Year 12 with a recommendation sheet to assist with this process.

Dress code

A general reminder about dress code which in recent weeks has resulted in some reminders to our students. We seek parental support to ensure that students are in dress code to assist us with identifying students on site and helping to ensure that students are appropriately dressed for St Marys Senior High School. All students enrolled at St Marys agreed to meet the dress code requirements. I am happy to discuss any concerns with students and/or parents if there are issues you believe the school should be aware of in order to support students. Even though we are an adult learning environment, we are also an educational organisation and as such, we expect all students to adhere to our dress code.

Enrolment Year 11 2022 and Year 12 2022

Enrolment timeframes for Year 11 2021 are as follows:

- Open Day will take place on Friday 26 March. This is now booked out due to COVID restrictions that remain in place.
- Expression of interest (EOI) forms for local and non-local enrolments are available now on our website and these forms and supporting documents are due by 2:30 pm to our school front office on Friday 21 May 2021. Any questions can be directed to our enrolment secretary. Please feel free to contact the front office on 02 9623 8333.
- The selection process will take place during June 2021.
- Successful applicants will be notified in early July 2021.

Key dates for non-local enrolment in Year 12 2021:

- EOI forms for enrolment were made available on Monday 7 December 2020 on our website.
- EOI forms for Year 12 2022 and supporting documents are due by 2:30 pm to our school front office on Monday 19 July 2021.



- The selection process will take place during August 2021.
- Successful applicants will be notified in early September 2021.

COVID-19 Update

Although New South Wales and Australia are travelling well at the moment there is ongoing concern from public health officials and NSW Police with regards to the wearing of face masks on public transport and a level of complacency amongst some commuters. Students are reminded that under the current public health order, a fitted face covering is required for commuters aged 12 years or older unless an exemption is in place.

A note of thanks

Finally, I would like to thank our community for their compassion and kindness, as well as the caring messages following the passing of our beautiful Tara. This has been a very difficult time for many of us and the support for Tara's family and our school has demonstrated the generosity and kindheartedness of our learning community.

Sally Smithard

Principal

With thanks to the generosity of our amazing school community, we have made a donation to Canteen of over \$1000, in memory of our much loved Tara



'Follow the second star to the right, and straight on till morning'

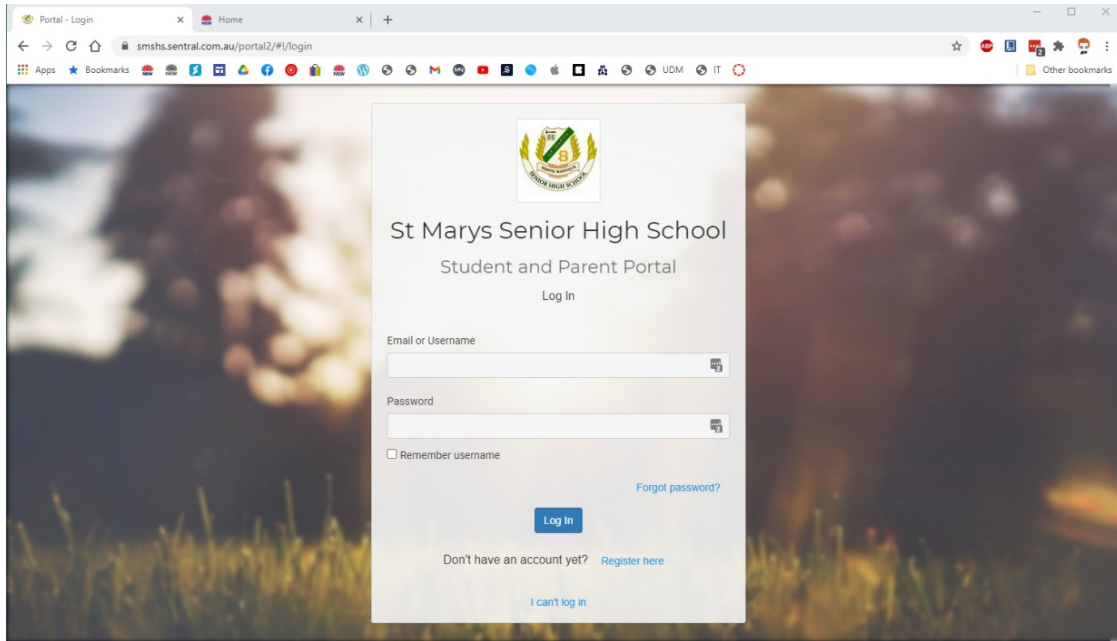
~ Peter Pan



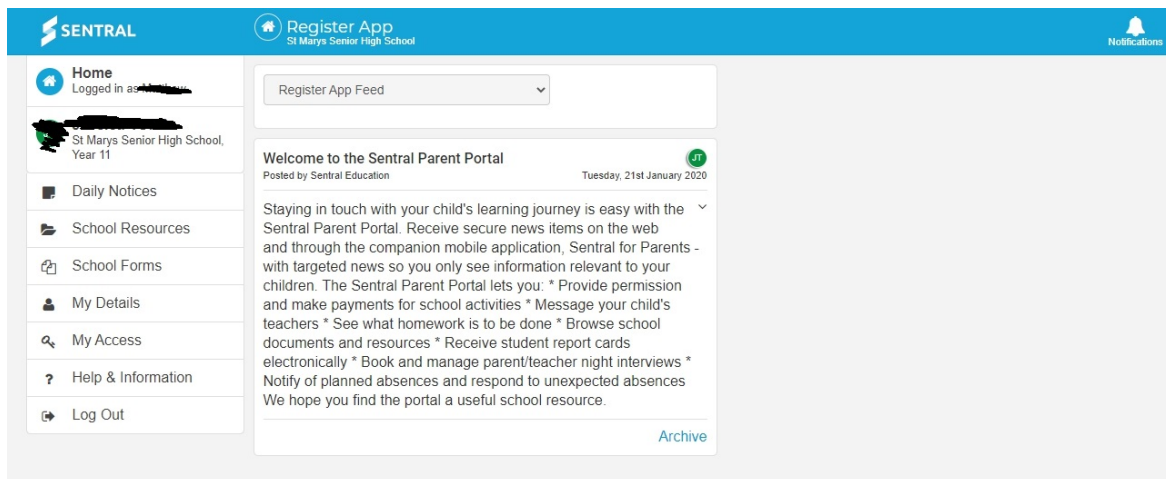
Sentral Update

St Marys Senior High School will soon migrate its Sentral Parent Portal to Sentral's Parent Portal V2. There are a few changes to go with this upgrade, which are outlined below.

First, the address is still the same, but the login screen is a little different.



The interface is a little different, but all the same information is available through the menu on the left.

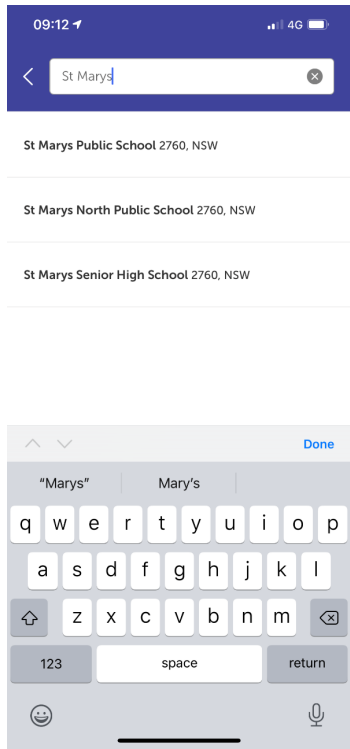


An added benefit of the Sentral Parent Portal V2 is the Parents app, available for both Apple and Android devices.

- Get the apple version here: <https://apps.apple.com/au/app/sentral-for-parents/id1238744022>
- Get the Android from here: <https://play.google.com/store/apps/details?id=com.sentral.mobile>
- You can also search for the Sentral Parent Portal

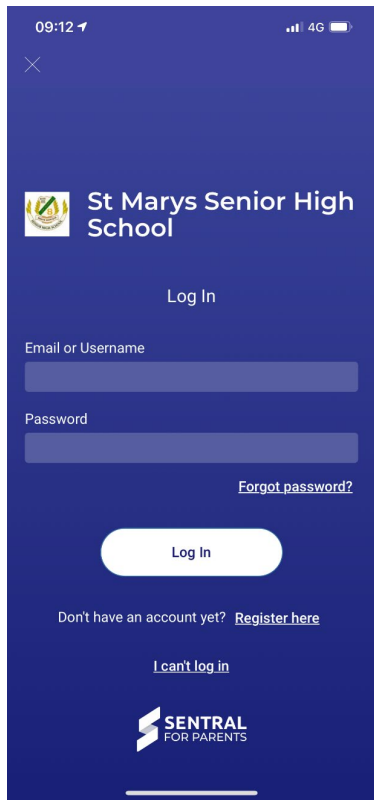


Once installed, it's a simple process to get up and running



The screenshot shows the app's search interface. At the top, there is a search bar with the text "St Marys". Below the search bar, three search results are listed: "St Marys Public School 2760, NSW", "St Marys North Public School 2760, NSW", and "St Marys Senior High School 2760, NSW". A keyboard is visible at the bottom of the screen, with the word "Marys" in the search bar.

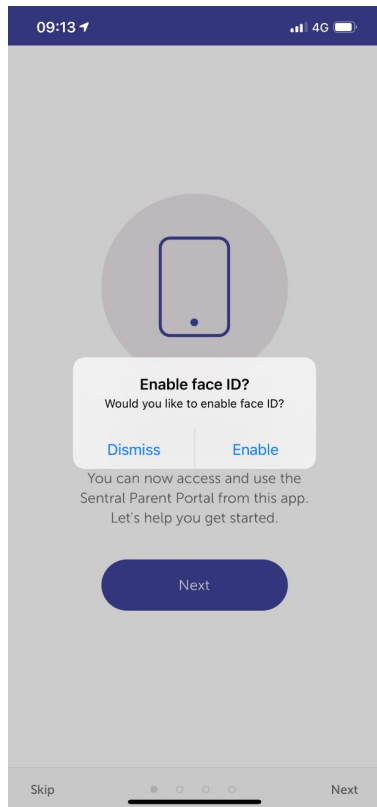
Open the App and search for St Marys Senior High



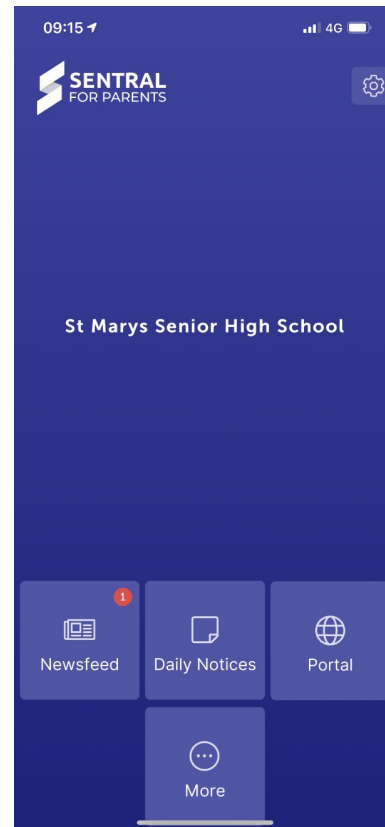
The screenshot shows the app's login screen for St Marys Senior High School. The screen features the school's logo and name at the top. Below the logo, there is a "Log In" button. Underneath, there are two input fields: "Email or Username" and "Password". The "Email or Username" field contains the text "my.email@address". Below the password field, there is a "Forgot password?" link. At the bottom of the screen, there is a "Log In" button, a link for "Don't have an account yet? Register here", and a link for "I can't log in". The app's logo is visible at the very bottom.

Log in with your registered address





Set security if you like, this is being set up on an iPhone that lets me use FaceID to secure my account



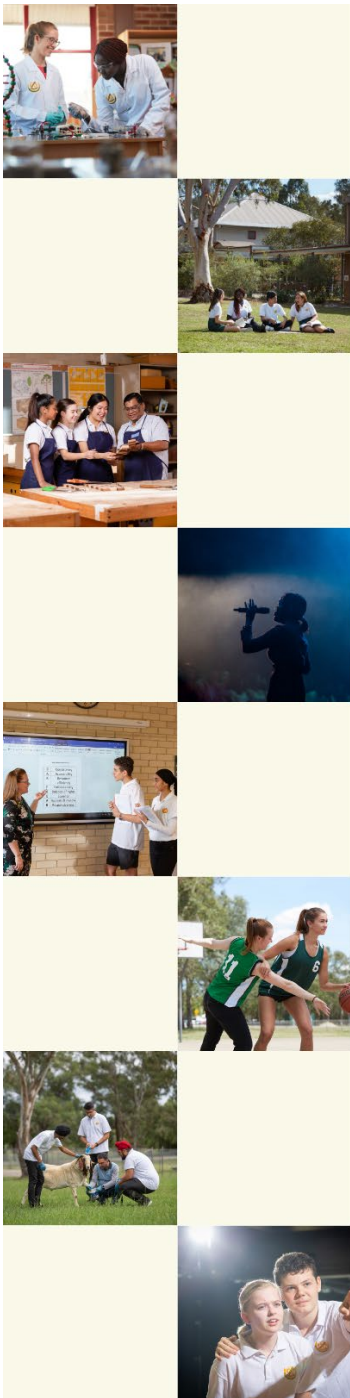
All the same information is available in the Parent App as the website.

If you have any problems, please be sure to contact me at school on 02 9623 8333 or via the school email address (stmaryssen-h.school@det.nsw.edu.au).

Matthew Topp

Head Teacher Computing Studies





OPEN EVENING

ST MARYS SENIOR HIGH SCHOOL

BOOKED OUT!

While we will not be holding a second evening, we are currently looking at other options for the dissemination of information on the school and subjects offered to prospective students and parents.

Please continue to check our website and social media pages for updates and more opportunities!

**Enrolments for Year 11 2022 close on
Friday May 21 2021**

For further information please see our school website
<https://stmaryssen-h.schools.nsw.gov.au>

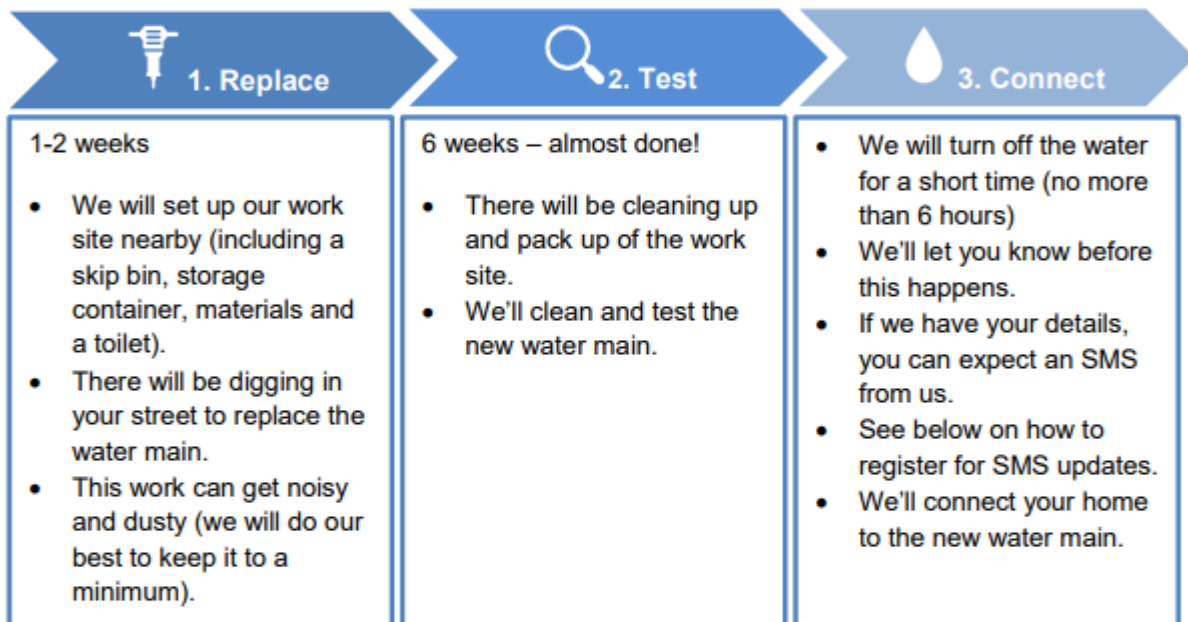
We're working in your area

15 March 2021

We'll soon start replacing a section of water main in Benalong Street, St Marys. This is not just about pipes. It's about water – clean, life sustaining water. Our work will ensure we can continue to give you clean and reliable water every day.

What can I expect?

We plan to start this work on **Monday, 22 March 2021**. This work will occur in three stages:



What you need to know

- We'll connect your home to a temporary water supply system during the work so that you have continuous supply.
- When installing and removing this system, **we will turn off the water for up to one hour.**
- We will knock on your door to let you know when we're doing this.
- There will be a pipe connected to your garden tap or water meter.

Our work hours are **7 am to 6 pm Monday to Friday and 8 am to 1 pm Saturday** however, to minimise the impact of our repairs on the community, we'll need to do some work at night.

Night work will be on **Wednesday 24 March 2021** for one night, weather permitting. **Work hours will be 8 pm to 5 am.**

Sydney Water Corporation ABN 49 776 225 038
 1 Smith St Parramatta 2150 | PO Box 399 Parramatta 2124 | DX 14 Sydney | T 13 20 92 | sydneywater.com.au
 Follow us on:  

Where do I get more information and help?

If you would like to know more, please contact our Community Engagement Advisor, Suzana Jolak on 1300 653 817 or suzana.jolak@westregion.team. If you need to make special arrangements with us, please reach out so we can work with you.

Thank you for your cooperation during this essential work.

Yours sincerely



Margaret Zhou
Project Manager

Interpreter Service 13 14 50

Arabic • Chinese • Greek • Italian • Korean • Vietnamese

إذا كنت نحتاج إلى مترجم، يرجى الاتصال بالرقم أعلاه.

如果您需要傳譯員的協助，請致電以上的號碼。

Αν χρειάζεστε διερμηνέα, τηλεφωνήστε στον παραπάνω αριθμό.

Se vi serve un interprete, telefonate al numero indicato sopra.

통역사가 필요하시면 위의 번호로 전화하십시오.

Nếu quý vị cần thông dịch viên, hãy gọi đến số trên đây.

For future updates...

If you would like to receive updates via email and/or SMS, please provide us your details at westregion@sydneywater.com.au

Student Concession Entitlement Cards

These cards can be picked up by students at our school's front office. They are valid until the expiry date printed on the card, provided the student continues to be enrolled at St Marys Senior High School.

*Should your Student Concession Entitlement card be expiring **BEFORE** you complete your schooling at St Marys Senior High School, please advise the Front Office at school **at least 4 weeks** before expiry so that a new card can be ordered.*



Concession Entitlement

- Concession fares on train, bus, light rail, metro, Sydney Ferries and NSW TrainLink services
- Concession fares on rural and regional bus services
- Concession Airport station access fee
- Child / Youth Opal card fares
- Not available on Manly Fast Ferry services, Special Event services or charter buses
- Privately owned and operated services may offer concessions at their own discretion, check with the operator before travelling

Card types issued are as follows:-

Senior Secondary Students (SSS)

- Senior Secondary Student Concession is applicable only for students 16 years or older
- Cards display product code (SSS)

Mature Secondary Students (MSS)

- Senior Secondary Student Concession is applicable only for students 18 years or older
- Cards display product code (MSS)

Proof Of Age (POA)

- Enables students to verify to transport staff that they are under 16 years of age
- Cards display product code (POA)



Conditions of Use

Applicable for Senior Secondary Student, Mature Senior Secondary, and Proof Of Age Concession cards:

- The Concession Entitlement is not transferrable and may only be used by the pass holder named on the card
- Valid only when showing all holder details, school information and expiry date
- A pass is rendered invalid by alteration, erasure or damage
- The card must be carried at all times when travelling, and be produced when purchasing tickets or as requested by Transport Officers or Transport Police
- Improper use of the card may result in forfeiture of future NSW travel entitlements

Lost, stolen or damaged cards

When a student's concession entitlement card has been lost, stolen or damaged, please apply for a replacement card at the Front Office of St Marys Senior High School. While waiting for a replacement card, students should travel with a valid ticket.

Change of Circumstances

When a student leaves the school, the Concession Entitlement card must be forfeited to the school before signing out.

STEWART HOUSE DONATION DRIVE 2021

Donation envelopes are available from the tables near the front office – and all donations help this organisation's invaluable work with students from public schools right across NSW.



Not feeling well?



- Be sure to stay at home and focus on feeling better!
- Parents and carers can contact the school to explain your absence
- If you go for a COVID-19 test, you need to provide the school with a copy of your test result before you can return to classes
 - If you have an assessment task to submit/complete, be sure to get a medical certificate to explain your absence



This fortnight @ SMSHS

Monday 22 Mar	Tuesday 23 Mar	Wednesday 24 Mar	Thursday 25 Mar	Friday 26 Mar
<p>French Film Festival Excursion – Year 11 and 12 French Classes</p> <p>Year 12 English EAL/D – Asst 2 due</p> <p>Year 12 Mathematics Extension 1 – Asst 2 due</p> <p>Year 11 Agriculture – Asst 1 due</p>	<p>PERIOD ZERO BELL TIMES</p> <p>School Council Meeting, 6pm, school front office</p> <p>Year 12 English Standard and Advanced – Asst 2 – Period Zero</p> <p>Year 11 Agriculture – Asst 1 due</p> <p>Year 11 Chemistry – Asst 1 due</p> <p>Year 11 English Advanced – Asst 1 due</p> <p>Year 11 English Standard – Asst 1 due</p> <p>Year 11 Engineering Studies – Asst 1 due</p> <p>Year 11 Studies of Religion – Asst 1 due</p>	<p>PERIOD ZERO BELL TIMES</p> <p>CAPA Lunchtime Concert @ the COLA</p> <p>Year 11 Maths Standard and Advanced – Asst 1 – Period Zero</p> <p>Year 11 Agriculture – Asst 1 due</p> <p>Year 11 Japanese Continuers – Asst 1 due</p>	<p>PERIOD ZERO BELL TIMES</p> <p>Year 12 Maths Standard and Advanced – Asst 2 – Period Zero</p> <p>Year 12 IPT – Asst 2 due</p> <p>Year 12 PDHPE – Asst 2 due</p> <p>Year 11 Agriculture – Asst 1 due</p> <p>Year 11 Business Studies – Asst 1 due</p> <p>Year 11 Modern History – Asst 1 due</p> <p>Year 11 SDD – Asst 1 due</p>	<p>Open Evening 2021 – ticketed entry only</p> <p>Year 11 Agriculture – Asst 1 due</p> <p>Year 11 IT Multimedia – Asst 1 due</p>
Monday 29 Mar	Tuesday 30 Mar	Wednesday 31 Mar	Thursday 1 Apr	Friday 2 Apr
<p>Year 12 Agriculture – Asst 2 due</p> <p>Year 12 SDD – Asst 2 due</p> <p>Year 11 Earth and Environmental Science – Asst 1 due</p> <p>Year 11 Maths Ext 1 – Asst 1 due</p> <p>Year 11 Music 1 – Asst 1 due</p> <p>Year 11 Studies of Religion 1 – Asst 1 due</p>	<p>PERIOD ZERO BELL TIMES</p> <p>Year 11 2021 NESAs Sign Off – Period Zero</p> <p>NSW All Schools Triathlon</p> <p>Year 12 Economics – Asst 2 – Period Zero</p> <p>Year 12 Earth and Environmental Science – Asst 2 due</p> <p>Year 12 Geography – Asst 2 due</p> <p>Year 12 Hospitality – Cluster D due</p> <p>Year 11 Business Services – Cluster A due</p> <p>Year 11 French Beginners – Asst 1 due</p> <p>Year 11 Japanese Beginners – Asst 1 due</p> <p>Year 11 Korean Beginners – Asst 1 due</p> <p>Year 11 Legal Studies – Asst 1 due</p> <p>Year 11 Music 1 – Asst 1 due</p> <p>Year 11 Spanish Beginners – Asst 1 due</p>	<p>CAPA Lunchtime Concert @ the COLA</p> <p>Netball NSW Fast Five Carnival</p> <p>Curatorial Task, Periods 3-5</p> <p>Year 12 Business Services 2U – Cluster D due</p> <p>Year 12 Business Services 4U – Cluster C due</p> <p>Year 12 English Extension 1 – Asst 1 due</p> <p>Year 12 Music 1 – Asst 2 due</p> <p>Year 11 English Extension 1 – Asst 1 due</p> <p>Year 11 Italian Beginners – Asst 1 due</p> <p>Year 11 Textiles and Design – Asst 1 due</p>	<p>PERIOD ZERO BELL TIMES</p> <p>Year 11 Biology – Asst 1 – Period Zero</p> <p>Year 12 Music 1 – Asst 2 due</p>	<p>Good Friday</p>



Our Teams

Principal:	Sally Smithard
School Council President:	Sonia Matthews
School Captains:	Alice Chitos Chloe Nolasco
School Executive:	
- Deputy Principal (Year 11)	Danielle Ervine
- Deputy Principal (Year 12)	Leah Havord
- English	Julie Robinson
- Mathematics	Simone Pett
- Science	Lidija Radovancevic
- Commercial Studies	Salochna Reddy
- HSIE (Rel)	Rebecca Langham
- CAPA	Nicole Bonfield
- Computing	Matthew Topp
- LOTE	Luigi Serra
- TAS/PDHPE	Rebecca Powell
- Secondary Studies	Liz Hemmings
- Learning and Wellbeing	Melissa Jacka
- First Australians	Leah Havord
- Sport and Recreation	Joanne Brines
- Business Manager (Acting)	Rebecca Zinghini
- School Administrative Manager (Rel)	Kim Everett
Student Advisers:	
- Year 11, Surnames A-G	Mitchell Baker
- Year 11, Surnames H-O	Nicole Leong
- Year 11, Surnames P-Z	Jesse Vassallo
- Year 12, Surnames A-G	Nicola Preston
- Year 12, Surnames H-O	Luigi Serra
- Year 12, Surnames P-Z	Tim Weston
Learning Support:	Carmel Harriden Dianne Pyne Nicole Leong Carly McPherson
Careers Adviser:	Lynette Tuckwell

Contact Us



St Marys Senior High School
Kalang Avenue
St Marys NSW 2760



02 9623 8333



stmaryssen-h.school@det.nsw.edu.au



St Marys Senior High School Official Site -
Facebook



St Marys Senior High School -
Skoolbag App

